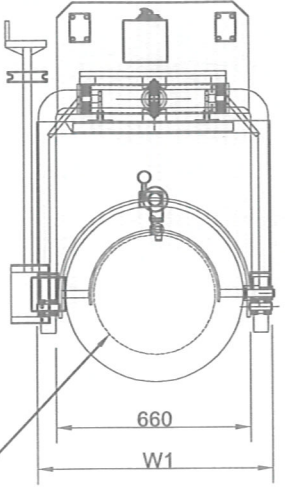
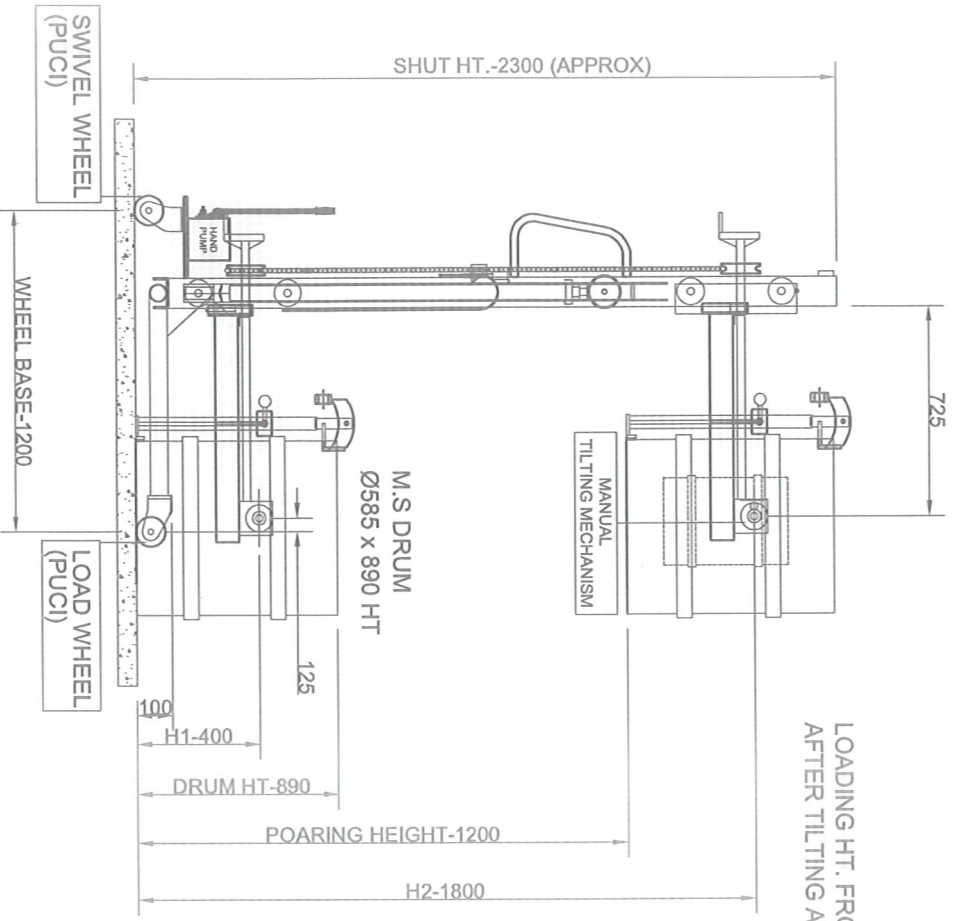


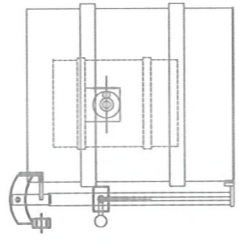
IF IN DOUBT PL ASKI



DETACHABLE TYPE DRUM HOLDER

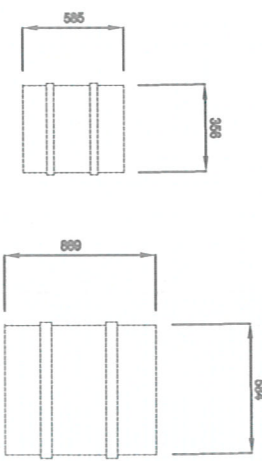


LOADING HT. FROM GROUND
AFTER TILTING AT 180°



SR	PARAMETERS	SYMBOL	SPECIFICATION
1	LIFTING CAPACITY	C	250
2	MIN HT.	H1	400
3	MAX HT.	H2	1800
4	OVERALL LENGTH	L1	1800 (APPROX)
5	OVERALL WIDTH	W1	860 (APPROX)
6	SHUT HEIGHT		2300
7	LIFT MOC	M.S	
8	LIFTING SEED		GOLDEN YELLOW PAINT
9	LOAD CONSIDERED		6-10 MM/STROKE UNIFORMLY DISTRIBUTED
10	A-TTHIS IS SCHEMATIC REPRESENTATION ONLY, ACTUAL MACHINE MAY VARY SLIGHTLY.		
11	DRUM CLAMP WITH BELT AND BRACKET STD ASSLY FOR STD DRUM M.S. / PLASTIC PVC		
12	STRICTLY AVOIDE METAL TO METAL FRICTION		
13	PALETTE SIZE -1000L x 1000W x 140 HT (INNER 900L x 120 HT.)		
14	DOOR HEIGHT-2430 (FROM CUSTOMER)		

DRUM SIZES GIVEN BY CUSTOMER



Handwritten signature and date: 18.05.2020

01	REVNO.	DESCRIPTION	DATE	SIP	T.W	N.H
			04.01.2020			
CUSTOMER-MERCK						
ALL DIMENSIONS ARE IN mm.						
CO.NO		PRODUCT NO.				
DRAWN		VP	29.03.2020			
CHECKED		TW	29.03.2020			
APPROVED		NH	29.03.2020			
TITLE		MANUAL HYDRAULIC DRUM LIFTER & TILTER				
DRAWING NO.		JAN26-J12-20				
SHEET NO.		1-1				
REV.		R0				

JOIST-O-MECH
(SINCE-1987)

Handwritten signature and date: 18.05.2020

This document is the exclusive property of ASMTA ENGINEERING EQUIPMENTS & its ownership rests with them. Its use in any form other than intended or copying reproducing or handing over to third party is strictly prohibited & Forbidden.